

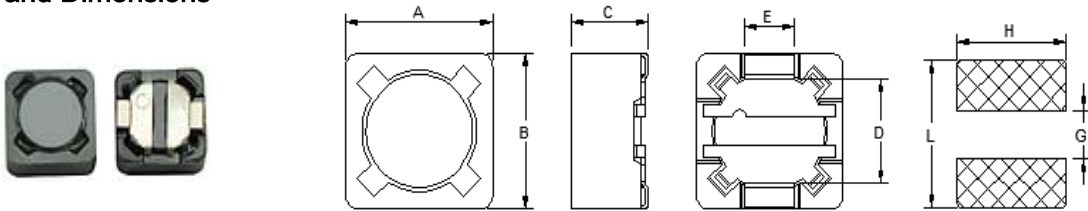
Features

- Excellent solderability and high heat resistance.
- Takes up less PCB real estate and save more power
- Packed in carrier tape and suitable for Surface Mounting Machine.
- Magnetic shielded type against radiation

Applications

- Ideally used in Notebook PC, LCD TV, Game machine, STB, Projector etc. as DC-DC convertor inductors.

Shapes and Dimensions



Packing Q'ty : 1,000 pcs/reel

Type	A	B	C	D	E	L	G	H
SDRH73	7.3 ± 0.3	7.3 ± 0.3	3.5 Max.	5.4 ± 0.2	1.8	8.0	4.8	2.2

Electrical Characteristics

Part Number	Inductance (uH)	Measuring Freq. (KHz)	D.C.R (Ω) max.	Rated Current (A) max.
SDRH73-1R0NC	1.0 ± 30%	100	0.016	7.97
SDRH73-1R5NC	1.5 ± 30%	100	0.023	5.50
SDRH73-2R2NC	2.2 ± 30%	100	0.027	4.50
SDRH73-3R3NC	3.3 ± 30%	100	0.031	4.00
SDRH73-3R9NC	3.9 ± 30%	100	0.041	3.80
SDRH73-4R7NC	4.7 ± 30%	100	0.048	3.50
SDRH73-5R6NC	5.6 ± 30%	100	0.056	3.00
SDRH73-6R8NC	6.8 ± 30%	100	0.062	2.50
SDRH73-100NC	10 ± 30%	100	0.072	1.68
SDRH73-120MC	12 ± 20%	100	0.098	1.52
SDRH73-150MC	15 ± 20%	100	0.130	1.33
SDRH73-180MC	18 ± 20%	100	0.140	1.20
SDRH73-220MC	22 ± 20%	100	0.190	1.07
SDRH73-270MC	27 ± 20%	100	0.210	0.96
SDRH73-330MC	33 ± 20%	100	0.240	0.91
SDRH73-390MC	39 ± 20%	100	0.320	0.77
SDRH73-470MC	47 ± 20%	100	0.360	0.76
SDRH73-560MC	56 ± 20%	100	0.470	0.68
SDRH73-680MC	68 ± 20%	100	0.520	0.61
SDRH73-820MC	82 ± 20%	100	0.690	0.57
SDRH73-101MC	100 ± 20%	100	0.790	0.50
SDRH73-121MC	120 ± 20%	100	0.890	0.49
SDRH73-151MC	150 ± 20%	100	1.270	0.43
SDRH73-181MC	180 ± 20%	100	1.450	0.39
SDRH73-221MC	220 ± 20%	100	1.650	0.35
SDRH73-271MC	270 ± 20%	100	2.310	0.32
SDRH73-331MC	330 ± 20%	100	2.620	0.28
SDRH73-391MC	390 ± 20%	100	2.940	0.26
SDRH73-471MC	470 ± 20%	100	4.180	0.24
SDRH73-561MC	560 ± 20%	100	4.670	0.22
SDRH73-681MC	680 ± 20%	100	5.730	0.19
SDRH73-821MC	820 ± 20%	100	6.540	0.18
SDRH73-102MC	1,000 ± 20%	100	9.440	0.16

NOTES:

Isat: DC current at which the inductance drops approximately 35% from its value without current.

Irms: DC current that causes the temperature rise (ΔT=40°C) from 20°C ambient